



homewise[®]
HOMES

AT TESSERA

PIÑON

3 BEDROOMS
2.5 BATHS



PUEBLO



CONTEMPORARY

Ledgestone is an optional upgrade

Renderings are for visual aid only. Garage placement may vary. 5/17

The homes at Tessera are built to the highest standards, embracing quality, value and energy efficiency. At Homewise Homes,[®] we believe *everyone* deserves to live well.



homewise[®] HOMES

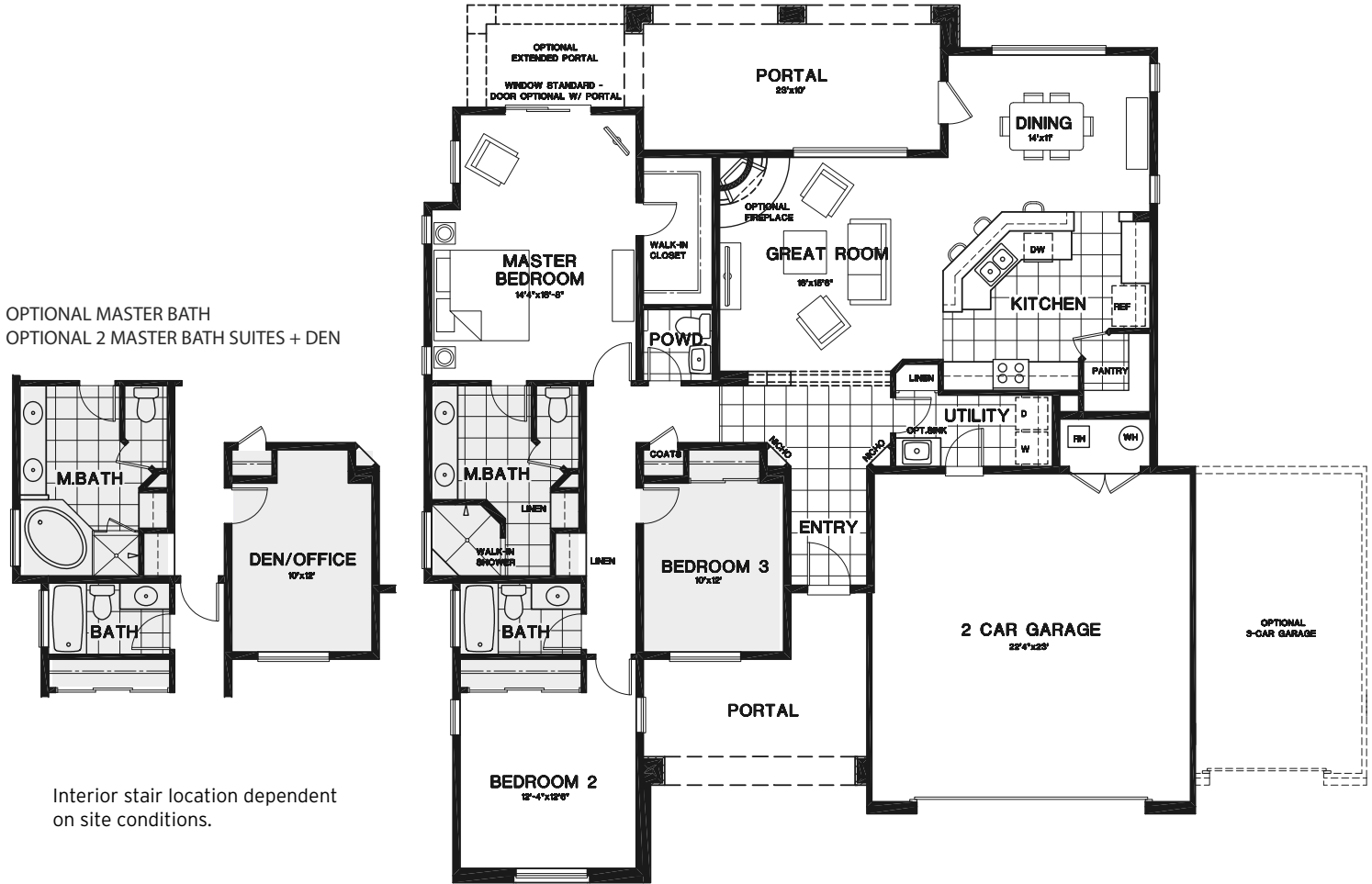
AT TESSERA

PIÑON

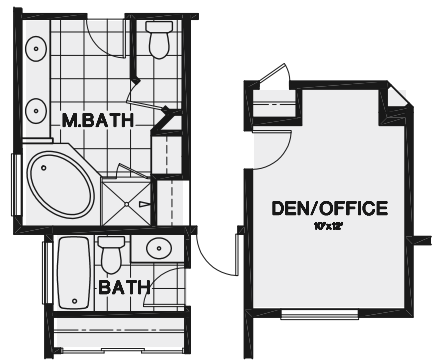
3 BEDROOMS
2.5 BATHS

HEATED: 1,849 SF
GARAGE: 562/830 SF

PORTAL: 385 SF
OPTIONAL PORTAL: 81 SF



OPTIONAL MASTER BATH
OPTIONAL 2 MASTER BATH SUITES + DEN



Interior stair location dependent on site conditions.

Banu Ogan Associate Broker
505.629.2774
bogan@homewise.org

Augusta Candelaria Qualifying Broker
505.603.5337
acandelaria@homewise.org

Aaron Fowler Associate Broker
505.795.1114
afowler@homewise.org



Homewise, Inc. 1301 Siler Rd, Bldg D, Santa Fe, NM 87507 505.983.WISE(9473) www.homewise.org/tessera

Income or other restrictions may apply. Elevations shown are artist concepts. Floor plans may vary per elevation. All room sizes are approximate; consult blue-prints for specific details. Continuing a policy of constant research, design and improvement, Homewise Inc. reserves the right of price, plan and specification change without notice or prior obligation. Please check with Real Estate sales personnel to determine which lots are available for a specific house plan.



HW3667 5/17