



homewise[®]
HOMES

AT TESSERA

AGAVE

3 BEDROOMS
2 BATHS



Renderings are for visual aid only. Garage placement may vary. 10/17

The homes at Tessera are built to the highest standards, embracing quality, value and energy efficiency. At Homewise Homes,[®] we believe *everyone* deserves to live well.



homewise[®] HOMES

AT TESSERA

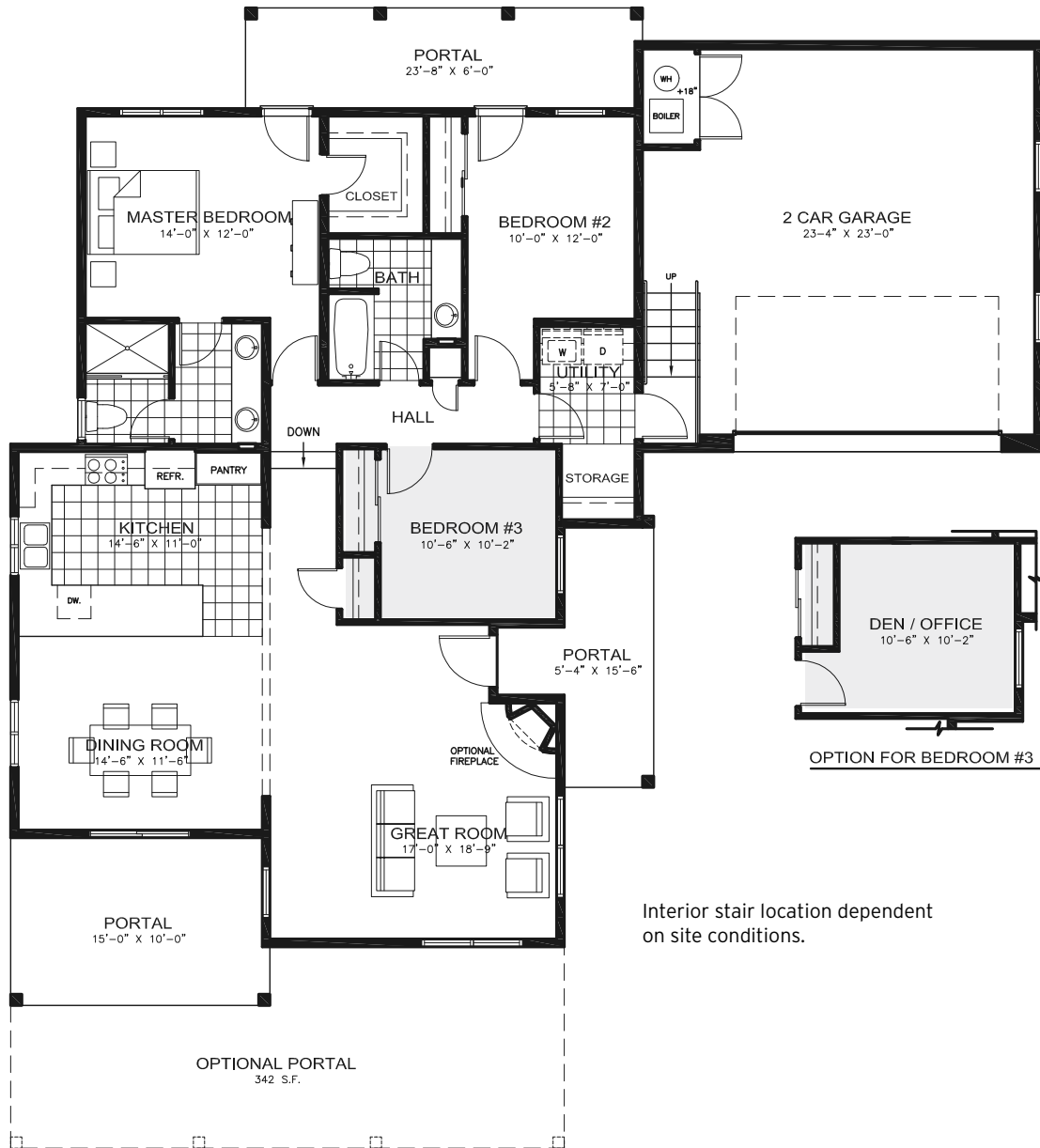
AGAVE

3 BEDROOMS
2 BATHS

HEATED: 1,567 SF
GARAGE: 589 SF

PORTAL: 100/141* SF
REAR PORTAL: 150 SF

*OPTIONAL EXTENDED



Interior stair location dependent on site conditions.

Banu Ogan Associate Broker
505.629.2774
bogan@homewise.org
License # 50601

Augusta Candelaria Qualifying Broker
505.603.5337
acandelaria@homewise.org
License # 19251

Aaron Fowler Associate Broker
505.795.1114
afowler@homewise.org
License # 16240



Homewise, Inc. 1301 Siler Rd, Bldg D, Santa Fe, NM 87507

505.983.WISE(9473)

www.homewise.org/tessera

Income or other restrictions may apply. Elevations shown are artist concepts. Floor plans may vary per elevation. All room sizes are approximate; consult blueprints for specific details. Continuing a policy of constant research, design and improvement, Homewise Inc. reserves the right of price, plan and specification change without notice or prior obligation. Please check with Real Estate sales personnel to determine which lots are available for a specific house plan.



HW4227 10/17