



homewise<sup>®</sup>  
HOMES

AT TESSERA

## CYPRESS

3 BEDROOMS  
2 BATHS



PUEBLO



CONTEMPORARY

Ledgestone is an optional upgrade

Renderings are for visual aid only. Garage placement may vary. 10/17

The homes at Tessera are built to the highest standards, embracing quality, value and energy efficiency. At Homewise Homes,<sup>®</sup> we believe *everyone* deserves to live well.



**homewise**<sup>®</sup>  
**HOMES**

AT TESSERA

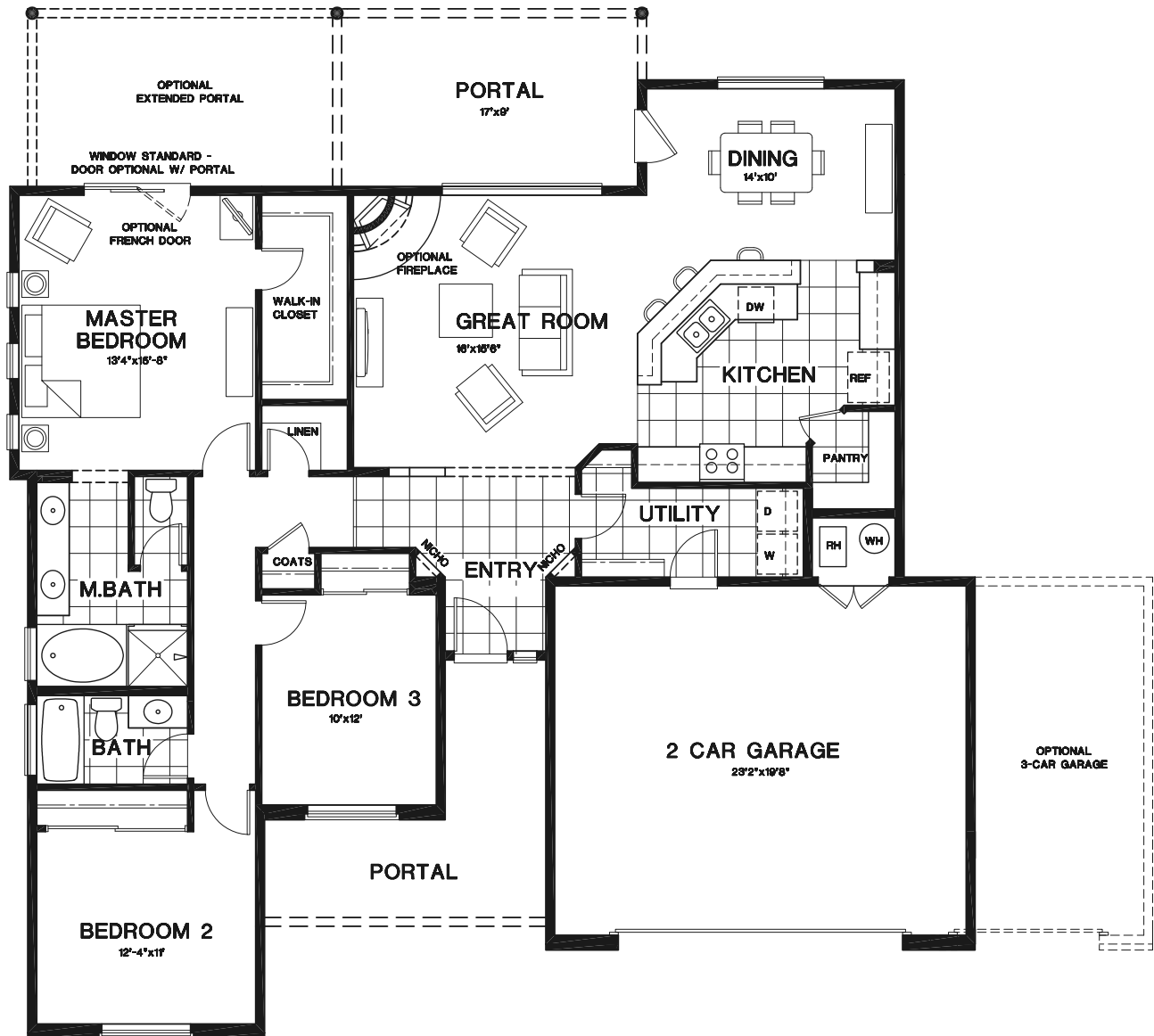
## CYPRESS

3 BEDROOMS  
2 BATHS

HEATED: 1,696 SF  
GARAGE: 509/774 SF

PORTAL: 147 SF  
REAR PORTAL: 173/344 SF\*

\*optional extended



Banu Ogan Associate Broker  
505.629.2774  
bogan@homewise.org  
License # 50601

Augusta Candelaria Qualifying Broker  
505.603.5337  
acandelaria@homewise.org  
License # 19251

Aaron Fowler Associate Broker  
505.795.1114  
afowler@homewise.org  
License # 16240



Homewise, Inc. 1301 Siler Rd, Bldg D, Santa Fe, NM 87507

505.983.WISE(9473)

www.homewise.org/tessera

Income or other restrictions may apply. Elevations shown are artist concepts. Floor plans may vary per elevation. All room sizes are approximate; consult blueprints for specific details. Continuing a policy of constant research, design and improvement, Homewise Inc. reserves the right of price, plan and specification change without notice or prior obligation. Please check with Real Estate sales personnel to determine which lots are available for a specific house plan.



HW3537 10/17