



homewise<sup>®</sup>  
HOMES

AT TESSERA

PIÑON

3 BEDROOMS  
2.5 BATHS



PUEBLO



CONTEMPORARY

Ledgestone is an optional upgrade

Renderings are for visual aid only. Garage placement may vary. 10/17

The homes at Tessera are built to the highest standards, embracing quality, value and energy efficiency. At Homewise Homes,<sup>®</sup> we believe *everyone* deserves to live well.



# homewise<sup>®</sup> HOMES

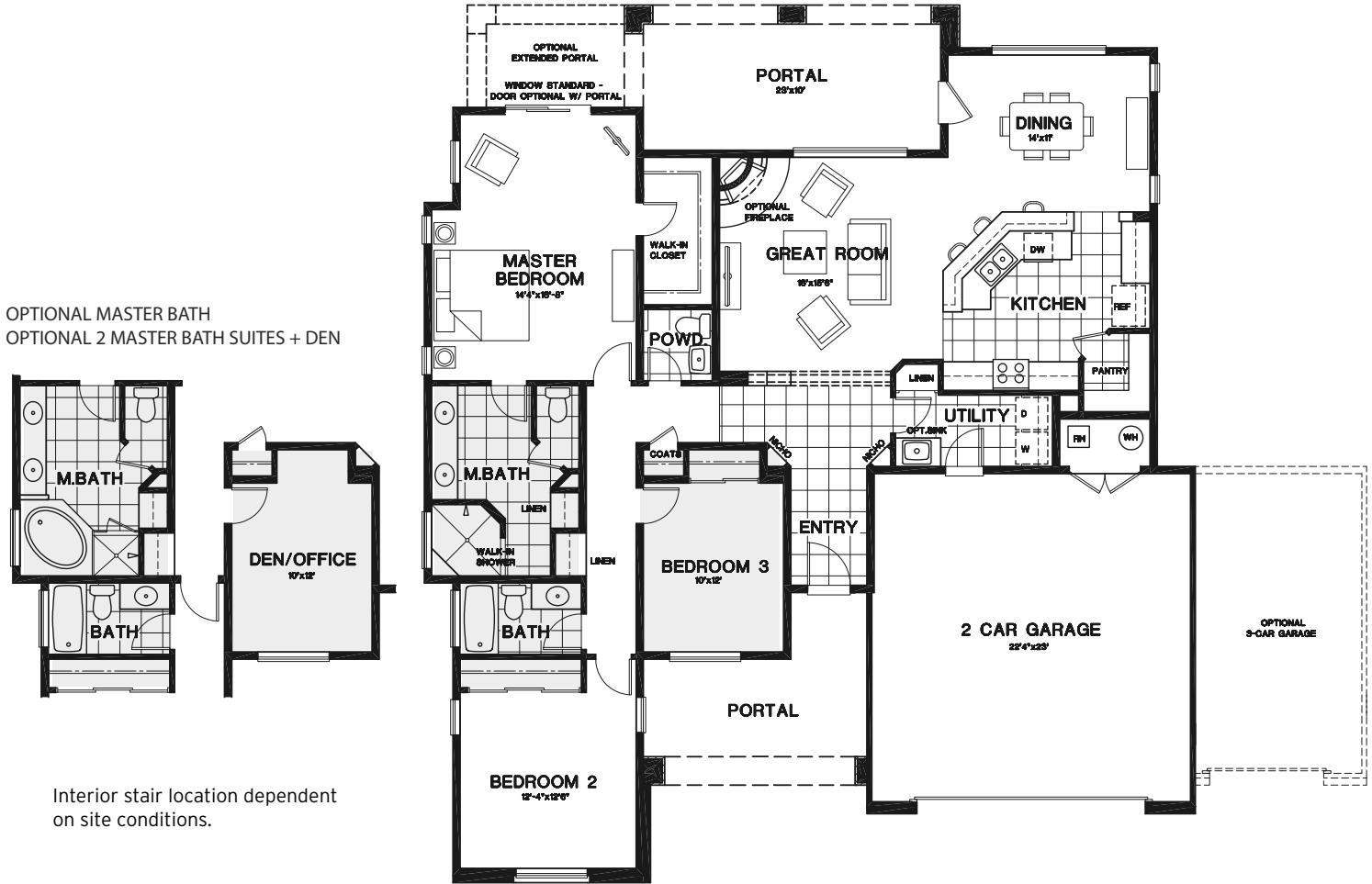
AT TESSERA

## PIÑON


3 BEDROOMS  
2.5 BATHS


HEATED: 1,849 SF  
GARAGE: 562/830 SF

PORTAL: 385 SF  
OPTIONAL PORTAL: 81 SF



Banu Ogan   
Associate Broker  
505.629.2774  
bogan@homewise.org  
License # 50601

Augusta Candelaria   
Qualifying Broker  
505.603.5337  
acandelaria@homewise.org  
License # 19251

Aaron Fowler   
Associate Broker  
505.795.1114  
afowler@homewise.org  
License # 16240



Homewise, Inc. 1301 Siler Rd, Bldg D, Santa Fe, NM 87507 505.983.WISE(9473) www.homewise.org/tessera