



homewise[®]
HOMES

AT TESSERA

SUMAC

3 BEDROOMS
2 BATHS



PUEBLO



CONTEMPORARY

Ledgestone is an optional upgrade

Renderings are for visual aid only. Garage placement may vary. 10/17

The homes at Tessera are built to the highest standards, embracing quality, value and energy efficiency. At Homewise Homes,[®] we believe *everyone* deserves to live well.



homewise[®]
HOMES

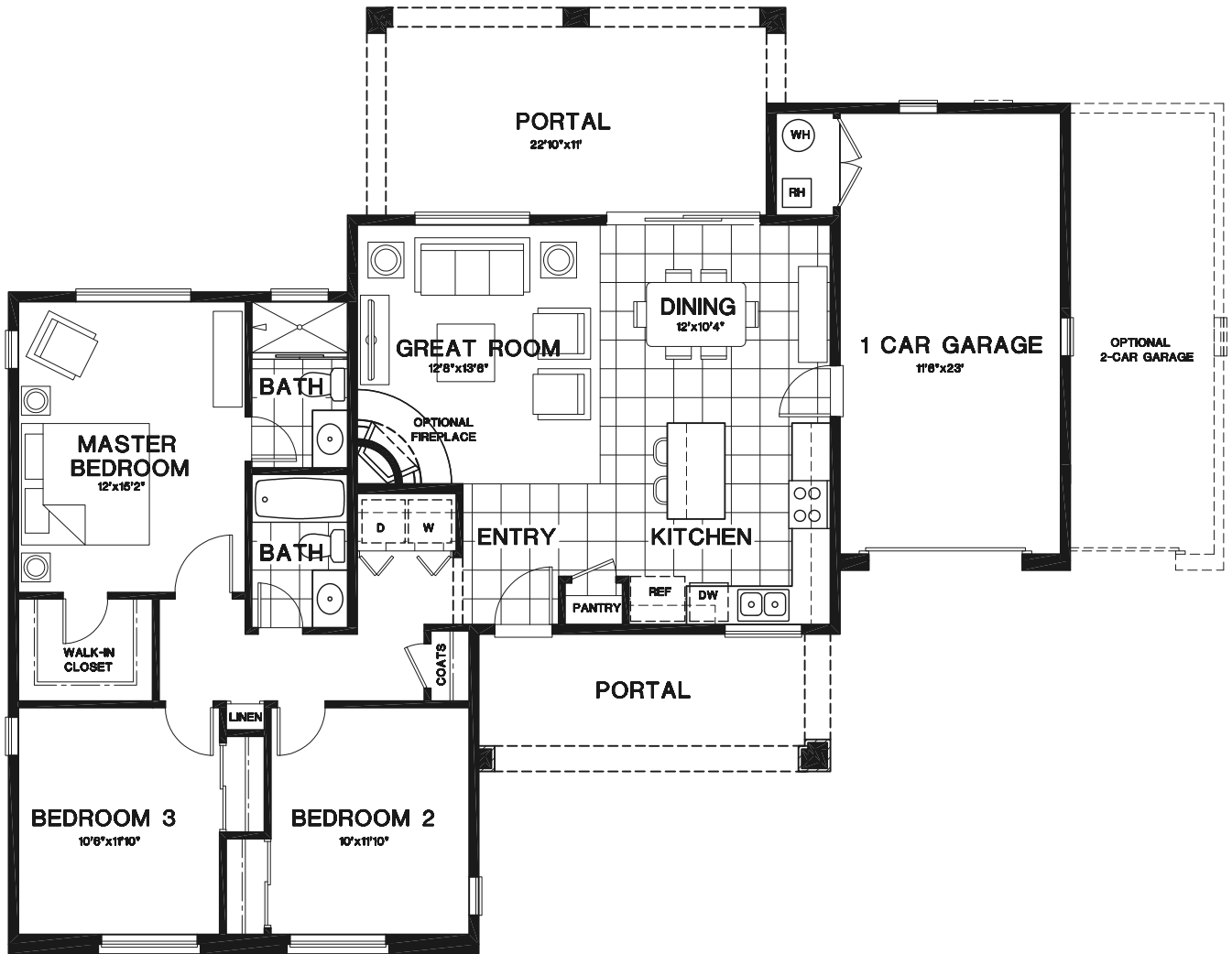
AT TESSERA


SUMAC


3 BEDROOMS
2 BATHS


HEATED: 1,271 SF
GARAGE: 314/509 SF

PORTAL: 135 SF
REAR PORTAL: 231 SF



Banu Ogan 
Associate Broker
505.629.2774
bogan@homewise.org
License #50601

Augusta Candelaria 
Qualifying Broker
505.603.5337
acandelaria@homewise.org
License #19251

Aaron Fowler 
Associate Broker
505.795.1114
afowler@homewise.org
License #16240



Homewise, Inc. 1301 Siler Rd, Bldg D, Santa Fe, NM 87507

505.983.WISE(9473)

www.homewise.org/tessera

Income or other restrictions may apply. Elevations shown are artist concepts. Floor plans may vary per elevation. All room sizes are approximate; consult blueprints for specific details. Continuing a policy of constant research, design and improvement, Homewise Inc. reserves the right of price, plan and specification change without notice or prior obligation. Please check with Real Estate sales personnel to determine which lots are available for a specific house plan.



HW3652 10/17