



homewise®  
HOMES

AT TESSERA

## MIMOSA

3 BEDROOMS  
2.5 BATHS



Contemporary elevation shown. Photo may reflect upgrades. Garage placement may vary. See back side for full disclosures.

9/19

Ashley Sisneros | Real Estate Sales Customer Service | 505.490.7860 | [asisneros@homewise.org](mailto:asisneros@homewise.org)

Saraí Arenas | Real Estate Sales Operations Coordinator | 505.955.7049 | [sarenas@homewise.org](mailto:sarenas@homewise.org) | NMLS# 52437

The homes at Tessera are built to the highest standards, embracing quality, value and energy efficiency. At Homewise Homes®, we believe *everyone* deserves to live well.



**homewise**<sup>®</sup>  
**HOMES**

AT TESSERA

## MIMOSA

3 BEDROOMS

HEATED: 2,110 SF

PORTAL: 133 SF

2.5 BATHS

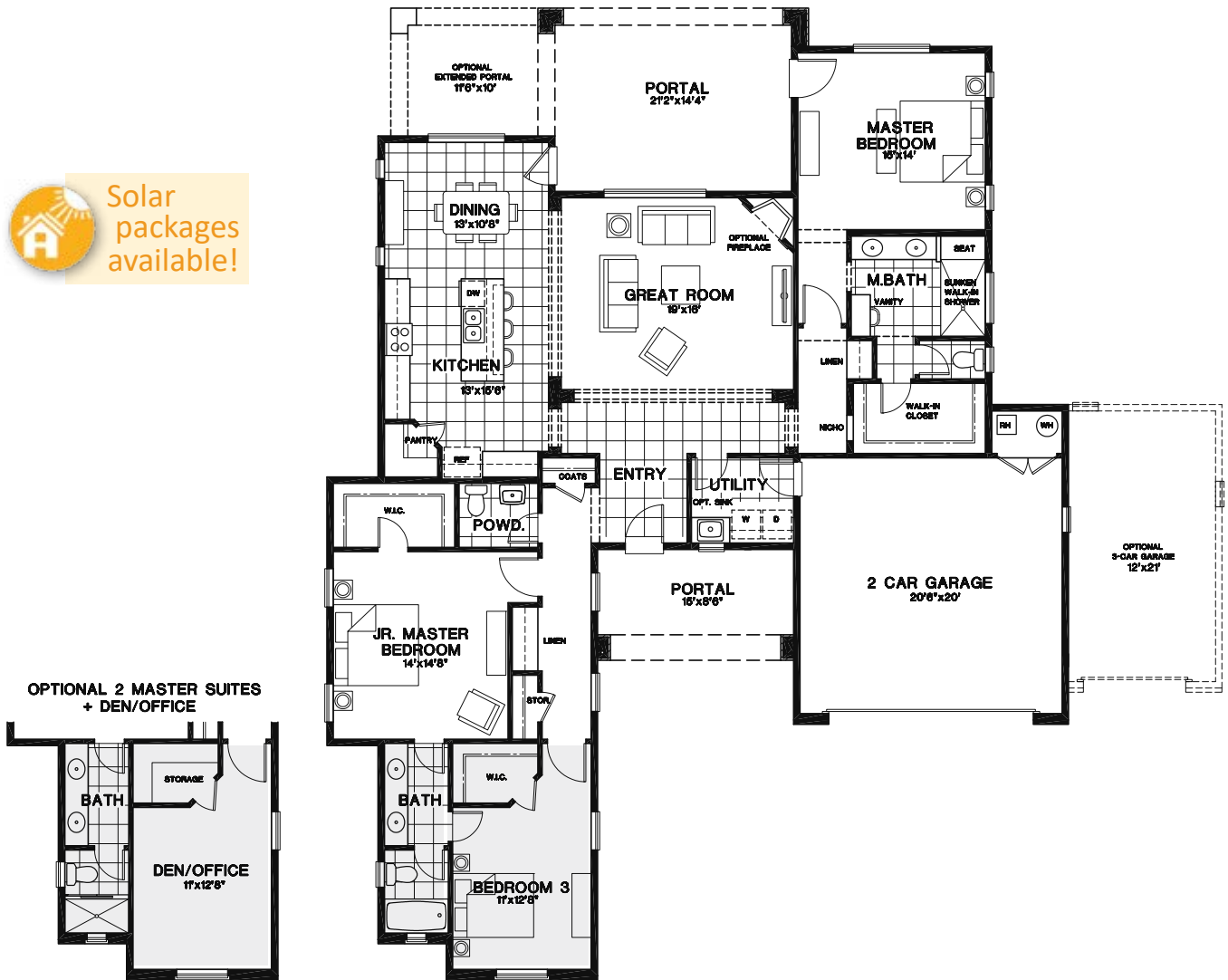
GARAGE: 460 / 724 SF

REAR PORTAL: 287 / 400 SF\*

\*optional extended



Solar packages available!



Homewise, Inc. 1301 Siler Rd, Bldg D, Santa Fe, NM 87507 505.983.WISE (9473) [www.homewise.org/tessera](http://www.homewise.org/tessera)

Aaron Fowler Qualifying Broker NMREL #16240

Income or other restrictions may apply. Photos of homes may reflect upgrades; refer to the 'Exceptional Features' flyer for a list of standard features, or the 'Options and Upgrades' flyer for a list of available upgrades. Actual construction may vary. Floor plans may vary per elevation. All room sizes are approximate. Continuing a policy of constant research, design and improvement, Homewise Inc. reserves the right of price, plan, specification and design change without notice or prior obligation. Check with Real Estate sales personnel to determine which lots are available for a specific house plan.



HW3650 9/19